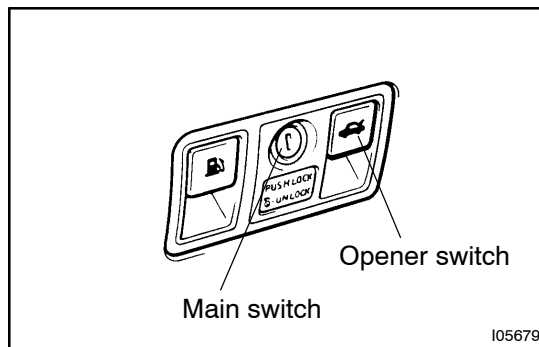


Luggage Compartment Door Opener Main Switch and Opener Switch Circuit

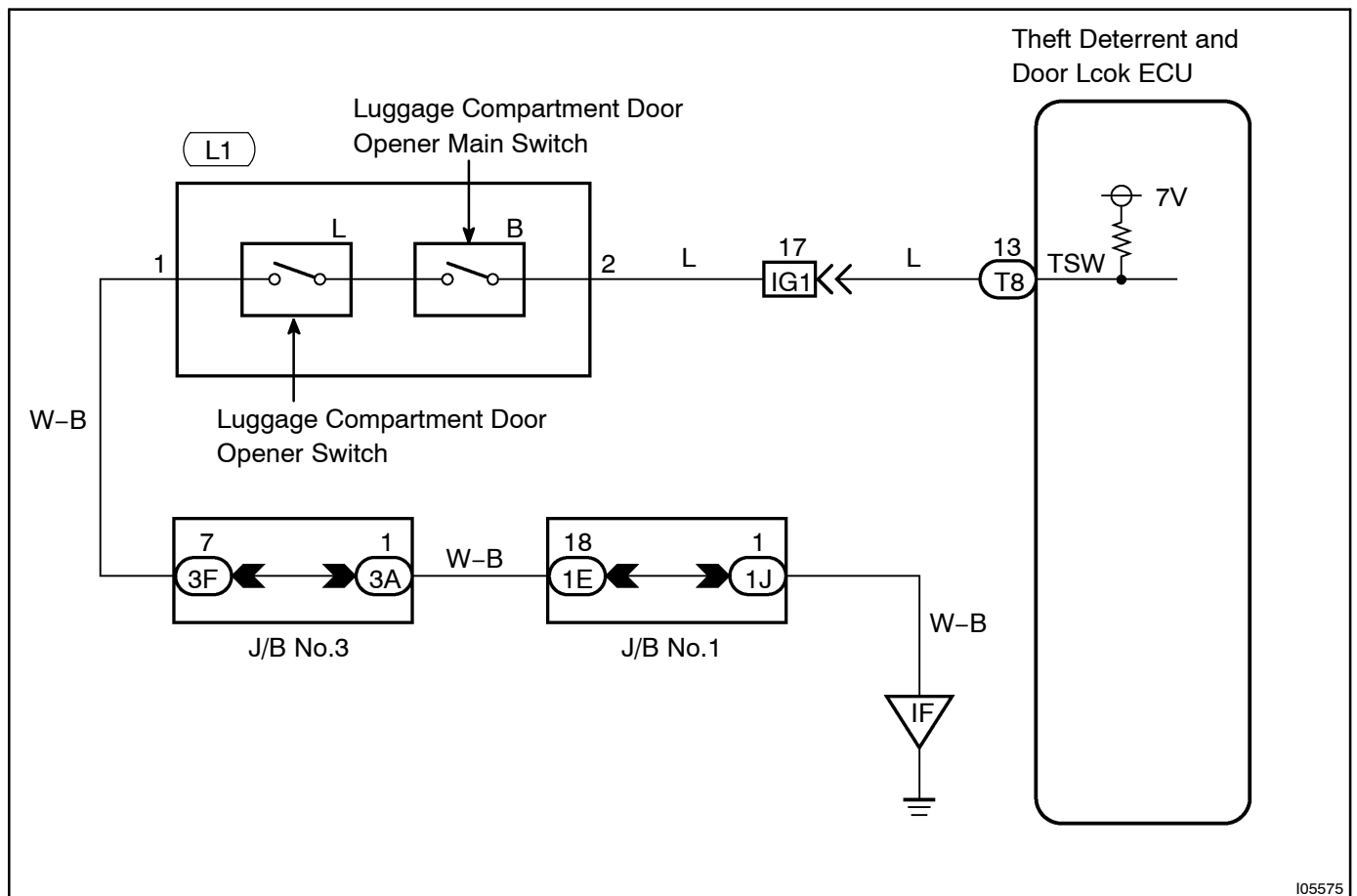
CIRCUIT DESCRIPTION



The luggage compartment door opener main switch is of when it is pushed in, and the luggage compartment door opener switch is on when it is pulled.

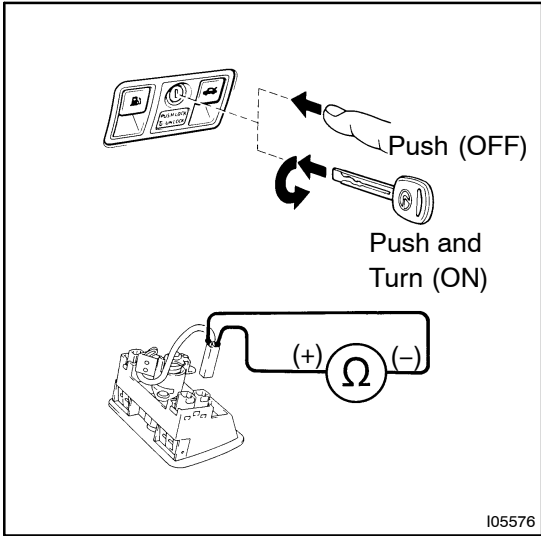
The ECU energizes the luggage compartment door opener motor only when the main switch and opener switch are on together.

WIRING DIAGRAM



INSPECTION PROCEDURE

1 Check luggage compartment door opener main switch and opener switch.



PREPARATION:

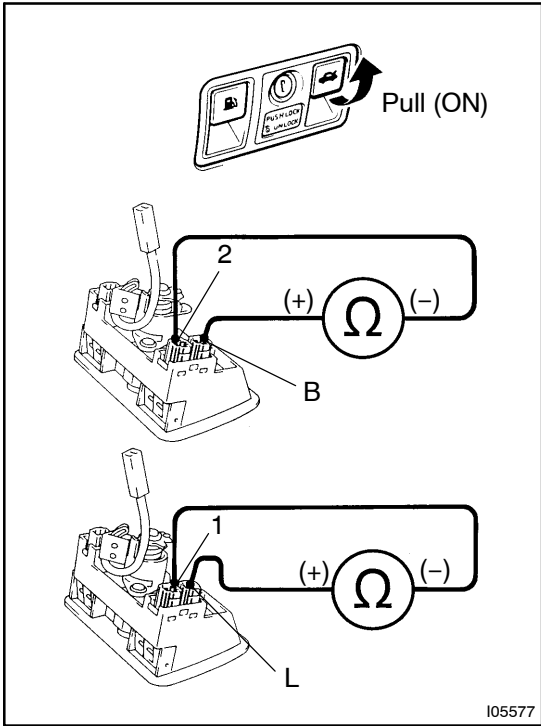
Disconnect the luggage compartment door opener main switch and opener switch connector.

CHECK:

Check luggage compartment door opener main switch. Check continuity between terminals of main switch connector.

OK:

Switch position	Terminal No. to continuity
ON (Push and turn)	1 - 2
OFF (Push)	



CHECK:

Check luggage compartment door opener switch. Check continuity between terminals of main switch and opener switch connector.

OK:

Switch position	Terminal No. to continuity	
ON (Pull)	2 - B	1 - L
OFF	2 - B	

NG

Replace luggage compartment door opener main switch and or opener switch.

OK

2	Check harness and connector between ECU and main switch, opener switch and body ground (See page IN-29).
---	---

NG

Repair or replace harness or connector.

OK

Proceed to next circuit inspection shown on problem symptom table (See page [DI-622](#)).